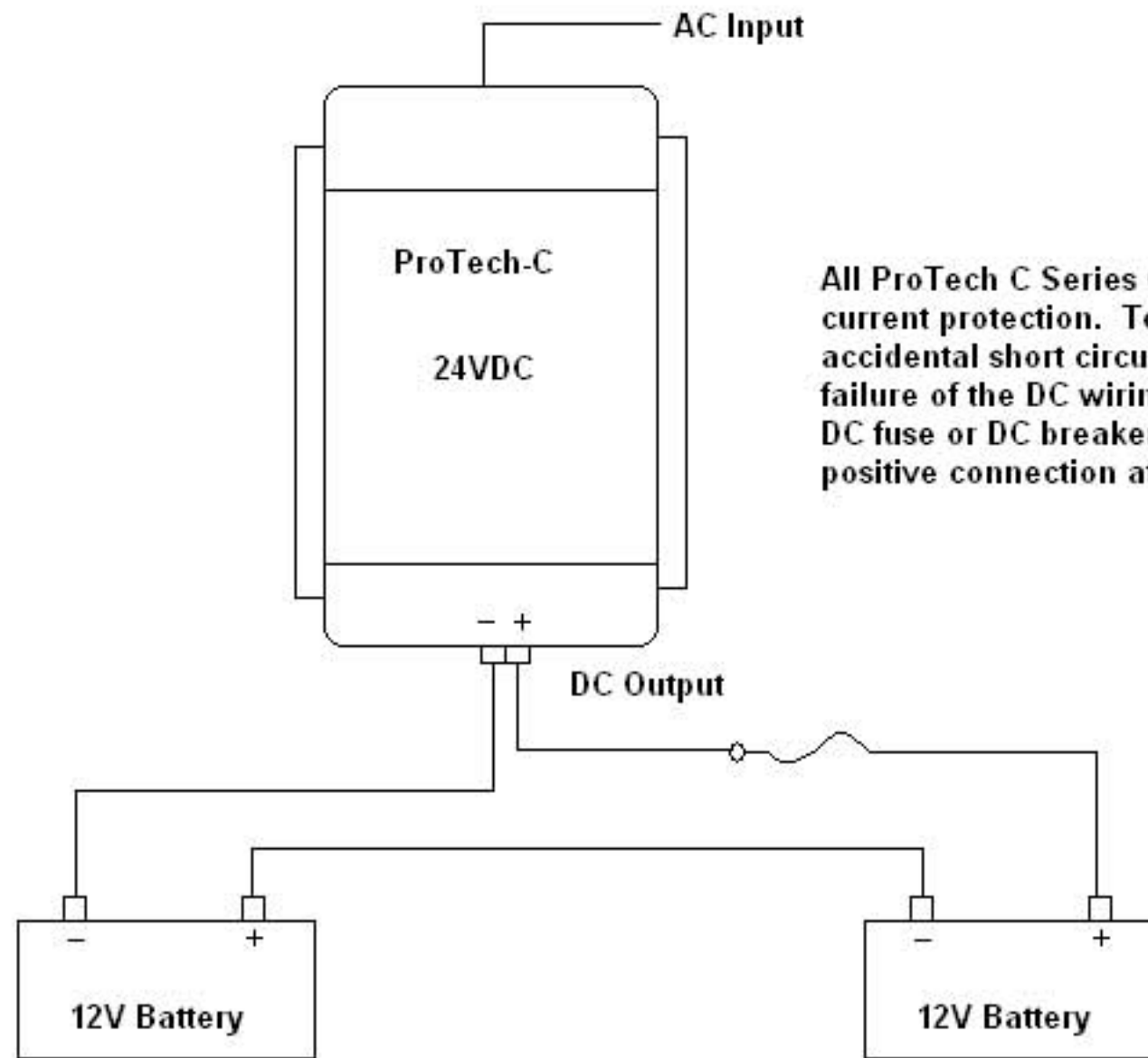


On Board Solutions Dry Mount Charger Wiring

Single Output Charger

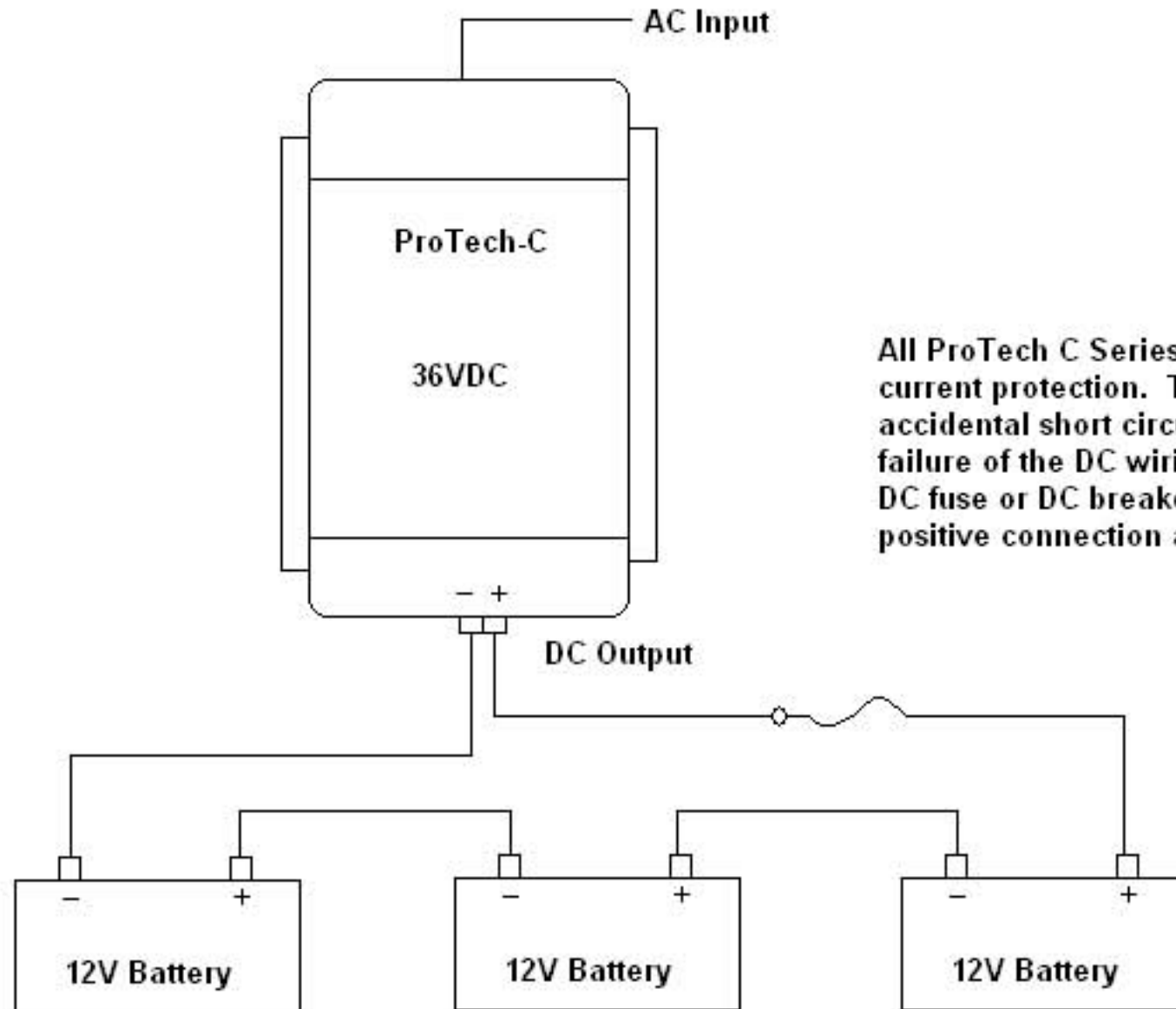


All ProTech C Series Chargers include over current protection. To protect DC wiring from accidental short circuits and or catastrophic failure of the DC wiring, install a properly rated DC fuse or DC breaker within 7 inches of the positive connection at the battery.

(24 Volt DC System Voltage)

On Board Solutions Dry Mount Charger Wiring

Single Output Charger



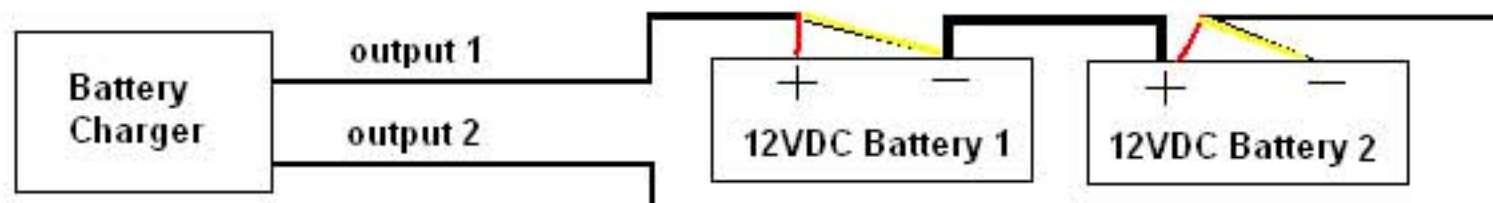
All ProTech C Series Chargers include over current protection. To protect DC wiring from accidental short circuits and or catastrophic failure of the DC wiring, install a properly rated DC fuse or DC breaker within 7 inches of the positive connection at the battery.

(36 Volt DC System Voltage)

ProMariner Waterproof Charger Wiring

Dual Output Chargers

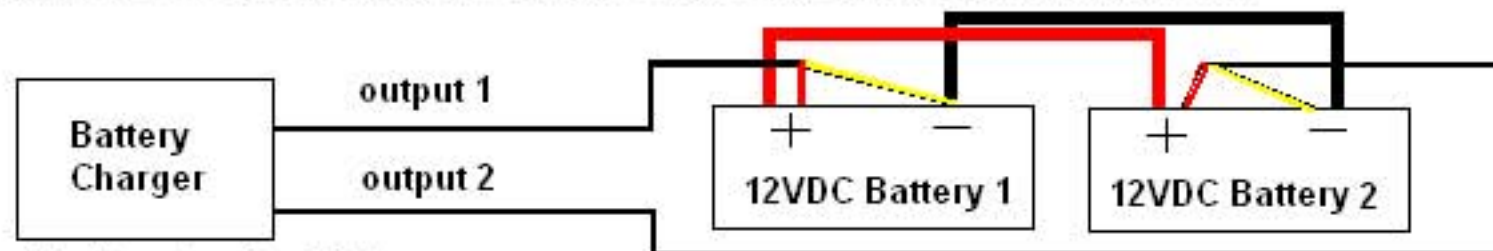
1. A two bank/output charger to a 24VDC system (batteries wired in series)



Connect red wire to + battery terminal and yellow wire to - battery terminal

(ex. ProSport or ProMite)

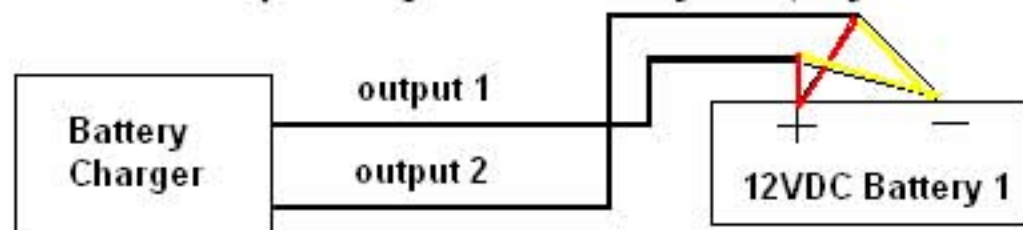
2. A two bank/output charger to a 12VDC system (batteries wired in parallel)



Connect red wire to + battery terminal and yellow wire to - battery terminal

(ex. ProSport or ProMite)

3. A two bank/output charger to a 12VDC system (only one battery)

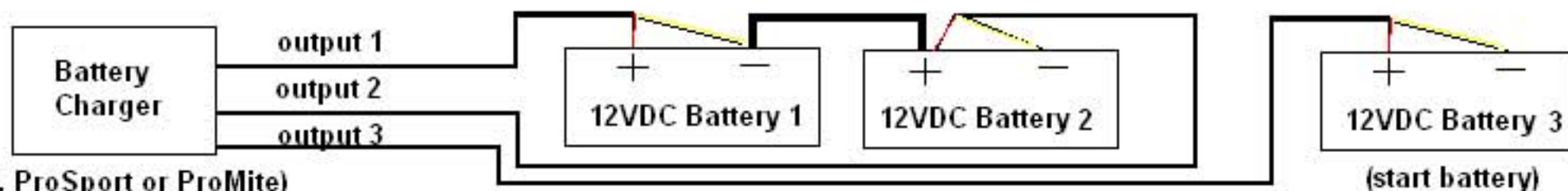


Connect red wire to + battery terminal and yellow wire to - battery terminal

(ex. ProSport or ProMite)

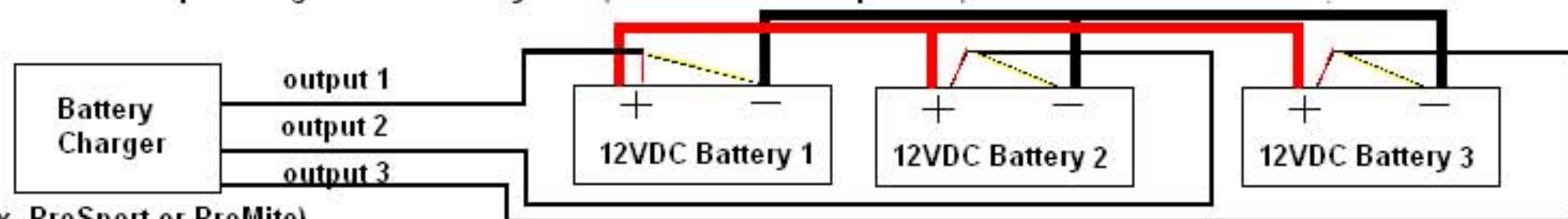
ProMariner Waterproof Charger Wiring Triple Output Chargers

1. A 3 bank/output charger to a 24VDC system (batteries wired in series) with a separate 12VDC start battery



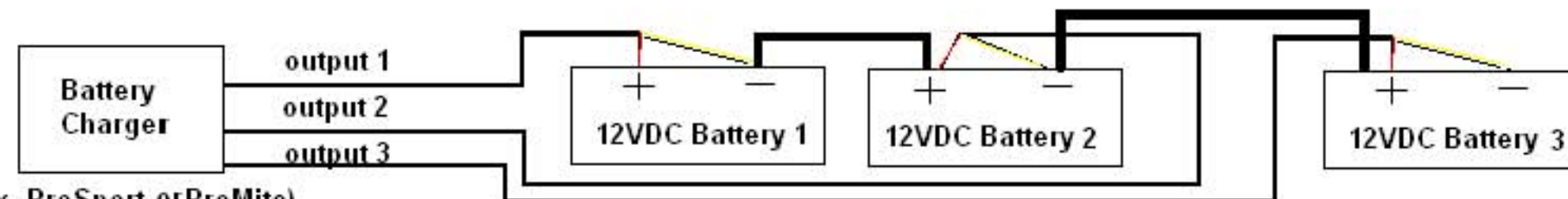
(ex. ProSport or ProMite)

2. A 3 bank/output charger to a 12VDC system (batteries wired in parallel)



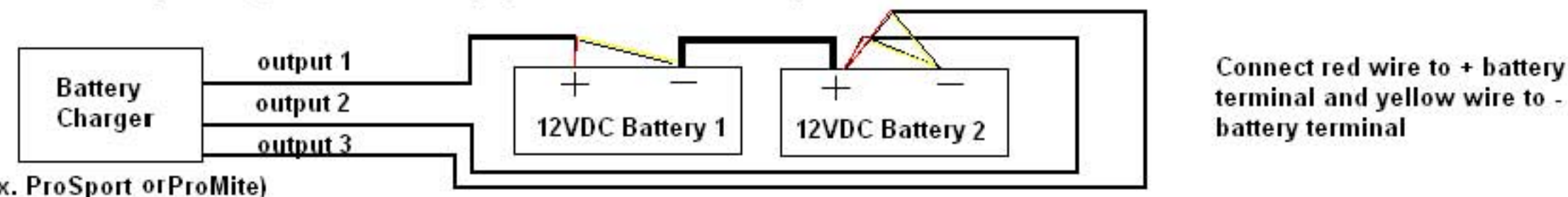
(ex. ProSport or ProMite)

3. A 3 bank/output charger to a 36VDC system (batteries wired in series)



(ex. ProSport or ProMite)

4. A 3 bank/output charger in a two battery system where the 3rd output must be terminated



(ex. ProSport or ProMite)